



FAMED SAĞLIK TIBBİ CİHAZLAR  
İTH. İHRC. SAN. ve TİC. LTD. ŞTİ.



## *Portable Small Animal Gastroscope*

# FMD-250H



[www.famed.com.tr](http://www.famed.com.tr)



[info@famed.com.tr](mailto:info@famed.com.tr)

# CMOS+LED Technology



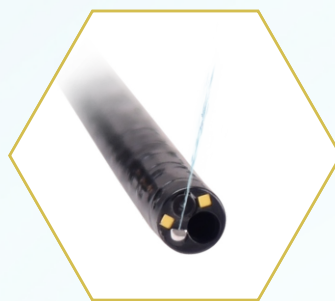
Non-fiber design makes it durable and easy for maintenance.



## Features



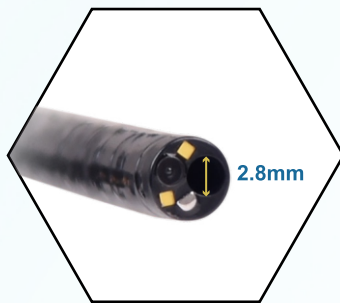
**Multi-function Buttons**  
① Zoom ② Capture/Record ③ Freeze



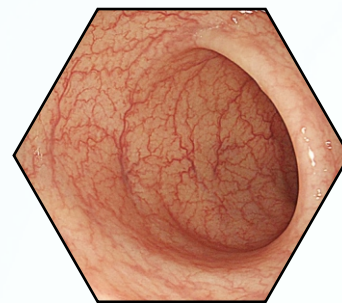
**Water/Air Nozzle**



**4-Way Deflection**

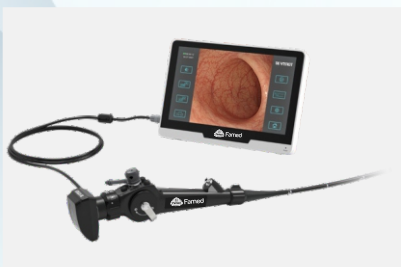


**Big Channel**



**HD 720P**

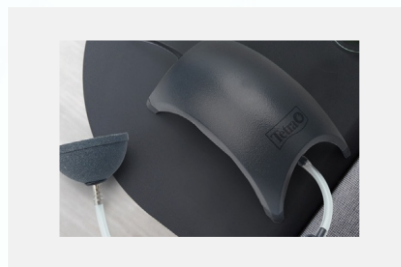
## Portable



**10inch Monitor**



**4inch Monitor**



**USB Water/Air Pump**

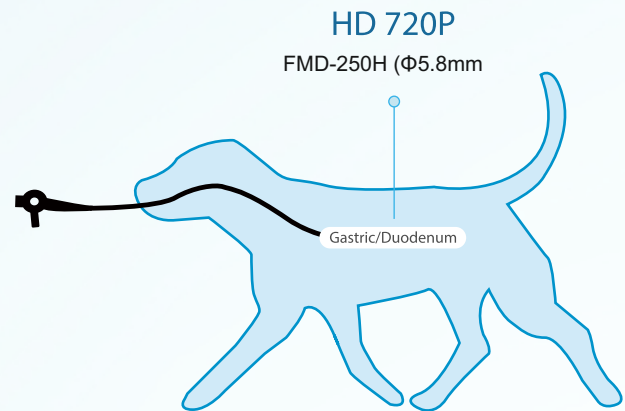
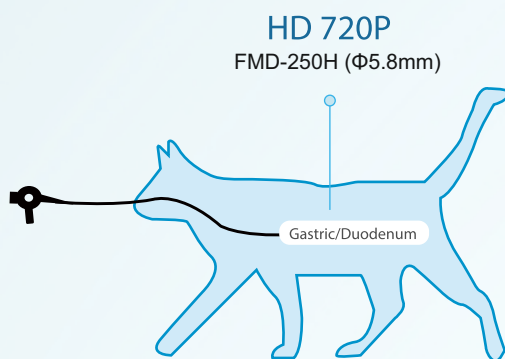


## Specification

Model	Insertion Tube	Working Channel	Working Length	Water/Air Nozzle	High Definition	Bending	Rotation	View Angle
FMD-250H	5.8mm	2.8mm	1500mm	Yes	1280*720	U180° D130°	L120° R120°	120°

## Small Animal Application

FMD-250H with its special water/air nozzle and big working channel, ideal for small animal gastroscopy.



Suction



Water/air Pump



Instrument

## Large Animal Application

With extended 1.5 meters working length and big working channel FMD-250H is ideal for equine applications, including upper and lower airway endoscopy, sinuscopy, vaginoscopy and hysteroscopy, etc.

